

Greer Fire District  
Discussion and Analysis of  
Basic Financial Statements  
June 30, 2015

The following discussion and analysis of the Greer Fire District (the district's) financial performance presents management's overview of the District's financial activities for the fiscal year ended June 30, 2015. Please read it in conjunction with the District's basic financial statements, which begin immediately following this analysis. This annual financial report consists of two parts: Management's Discussion and Analysis (this section) and the Basic Financial Statements.

**Nature of Operations**

The Greer Fire District, (GFD), serves the small village of Greer, located at 8500' elevation in Southern Apache County of Arizona. Located in the heart of the White Mountains and surrounded by the Apache National Forest, the District is a prime example of Wildland Urban Interface (WUI). Greer is a resort and retirement village with a year round population of less than 200. Summer visitors however, swell our population to an estimated 2,500 to 3,000.

The District operates with 13 sworn members, including 6 career firefighters. The balance of the personnel is made up of volunteers who receive nominal call out and training stipends. The District also employs 5 reserve firefighters who are paid on the same hourly scale, as the career staff. The district provides primary fire protection over a 28 square mile area and Emergency Medical Services over a much larger 450 square mile area. The EMS area includes approximately 86 miles of unpaved roads. The district performs two vital missions within the District: Fire Suppression and Emergency Medical Services.

**Fire Suppression**

Greer is located in a narrow valley, with residences, lodges and other structures scattered throughout. Most of the roads are unpaved. Many of the residences are serviceable only by four wheel drive vehicles, limiting the effectiveness of most large apparatus. The District uses smaller, more mobile apparatus to provide structure protection at these locations. Fire suppression is accomplished with quick attack and use of one Type 1 structure engine, a Type 3 urban interface engine, two Type 2 water tenders, and one Type 3 water tender for shuttling and drafting water. The District is located in, or surrounded by, the Apache National Forest. Accordingly, wildland fire suppression is a primary responsibility. Currently, the district operates one Type 6 brush attack truck. These vehicles also serve as our first response for wildland / structure interface calls, due to the reduced accessibility of many of our structures.

**Emergency Medical Services**

The staff that makes up Greer Fire District consists of 2 First Responders, 7 EMTs and 4 Paramedics as of June 30, 2015. The demand for these services has grown, accounting for the majority of our call volume. During the summer months, when the District is filled with visitors and part-time residents, the services provided by these crews can be stretched very thin. These same summer months are also our highest fire exposure season. Greer Fire District has first response responsibilities for motor vehicle accidents for approximately 35 miles of state highways in the District. State Highway 273 serves the state's largest ski area and Big Lake recreational area. Greer Fire responds as far east as Forest Road 116 on Hwy 273 and south on FR 116 to Reservation Lake. State Highway 260 is a major east west route through the area. The Arizona Department of Transportation reports average

daily vehicle counts of 1,200 to 1,300 on this section of Highway 260. During the summer months daily counts can be two to three times the average. As a rural combination district in a woodland resort area, GFD faces a seasonal spike in demand for both fire suppression and EMS services. The Greer Fire District is most exposed to wildland ignitions during the same period that the visitor influx has increased our need to respond to EMS calls.

### **Services to the Community**

The staff of Greer Fire District operates and supervises the public use of the USFS owned Benny Pit, which is a green waste disposal site. Crews unlock the and relock the site daily, along with making two to three patrols through the area looking for unauthorized items that have been dumped. The site is open throughout the year weather permitting.

Greer Fire began tracking our walk in visitors during the 2014-2015 FY. These numbers are reflected in our total call volume / public interaction increasing by 4.5 times. These visits range from visitors looking for directions to blood pressure checks, oxygen level checks, car seat installation inspections and automotive issues.

Our staff provides public information during fire season especially when there are fires burning in the vicinity.

During monsoon season, as a direct result of the Wallow Fire, our crews continue to patrol previously burned areas that are prone to flooding due to lack of vegetation. These are residential areas that are heavily travelled by local citizens and visitors alike. Road damage from flash floods occurs quickly, requiring Greer Fire to coordinate with the Apache County Roads department and Sheriff's Office to provide a quick response to mitigate these hazards.

Greer Fire performs fire inspections for both residential and commercial locations as well as gathering information for pre fire plans for the commercial locations within our District. This year the District created pre fire plans for all of the businesses in the District boundary.

Greer Fire District issues burn permits for campfires, bonfires and burning of trimmings within the District. Permittees are required to have a water source immediately available for suppression if needed as well as a requirement to contact the duty crew at the District prior to ignition. This allows us to know what is burning and when it burning. The District denies permits on days when the fire weather is poor and fire dangers are high. No burn permits will be issued under Stage 2 burn restrictions. During the 2014-2015 FY GFD issued 262 burn permits to residents and visitors, an increase of 47% increase from the prior year.

### **Results of Operations**

During the 2014-2015 FY the District responded to a total of 71 "emergency calls", up from 64 calls the previous year. This was a 9% increase in calls from the previous year. The following charts show a break out of those responses between Fire calls, including motor vehicle accidents, and medical calls. January 1, 2015 GFD also began tracking service calls, which would include welfare checks blood pressure checks, and public assists. For the initial 6 months of tracking these activities the District logged 212 service calls. For the 2015 -2016 FY there should be complete numbers for this category as well. Combined with the emergency calls logged GFD has a total call number of 283. This number reflects a 450% increase in overall activity.

The following graphs represent the breakdown of calls per month by category.

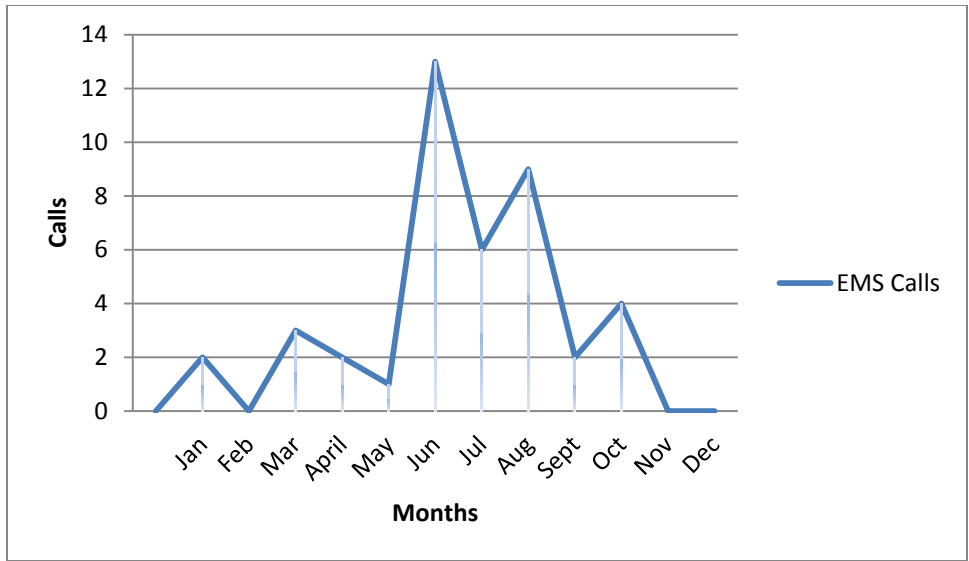


Figure 1 Fire Calls

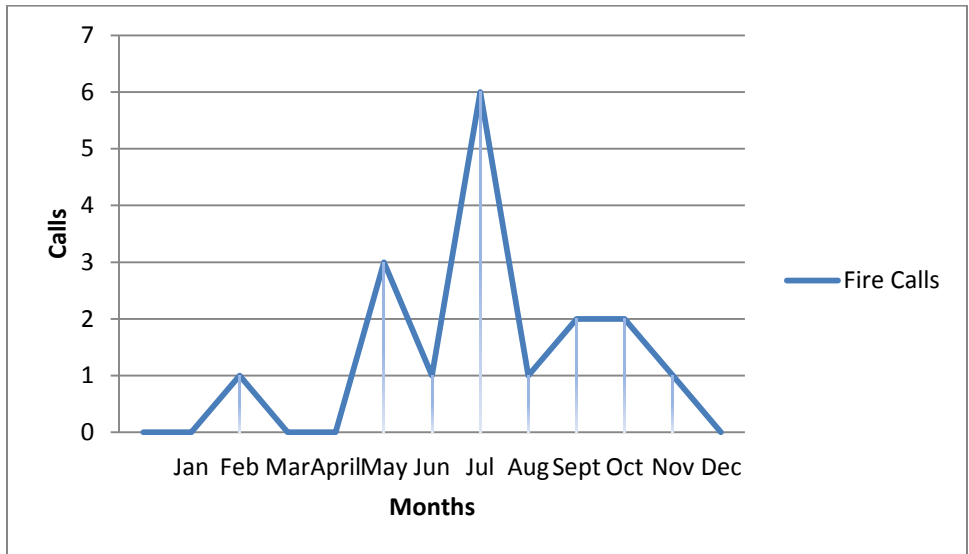


Figure 2 Fire Calls

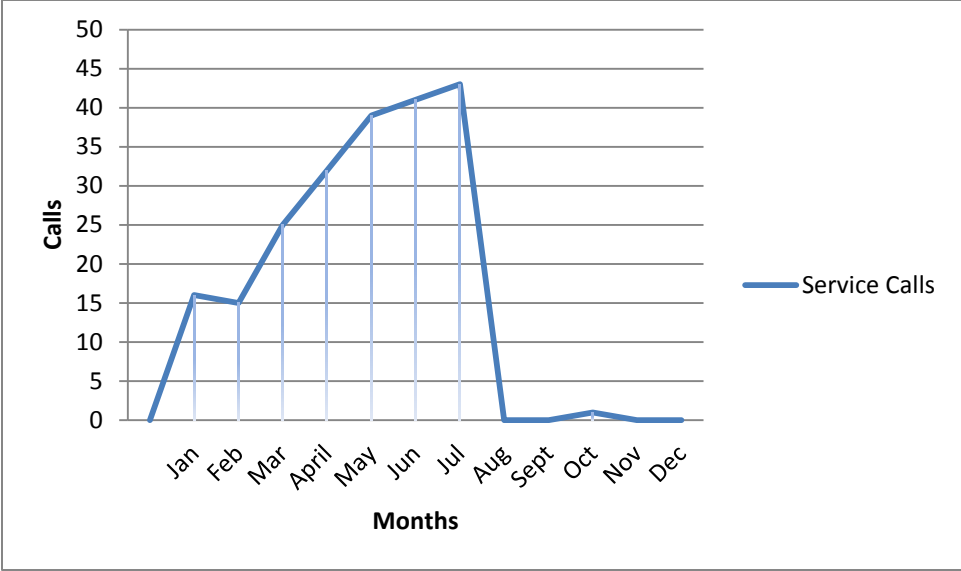


Figure 3 Service Calls

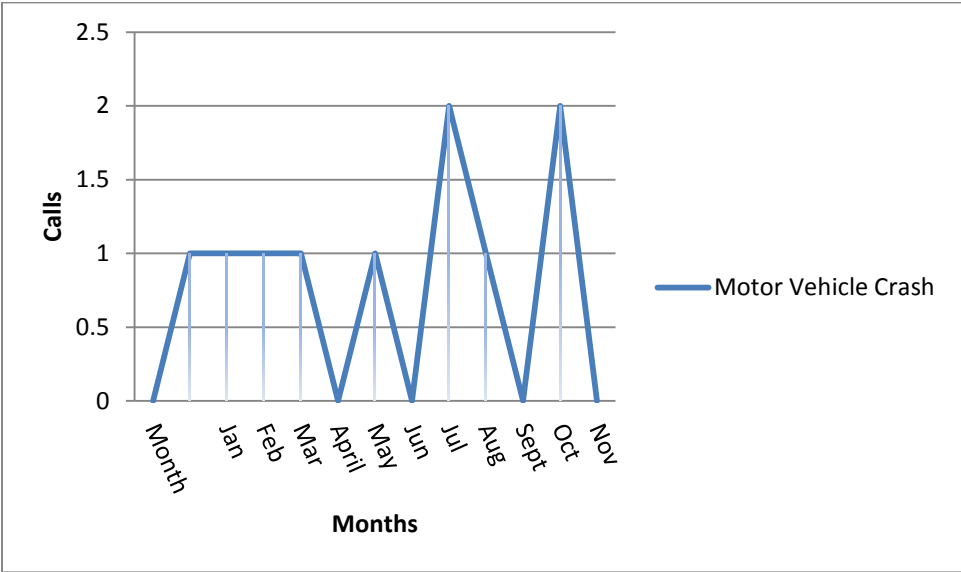


Figure 4 Motor Vehicle Crash

## **Personnel**

In 2014- 2015 GFD had 3 full time paid shift firefighters, providing 1 paid firefighter per shift. GFD has a total of 6 paid employees as of June 30, 2015. Mark Wade is the Fire Chief and Rye Sluiter is Deputy Fire Chief. RJ Carnright holds the position of Captain, which is a 48 hour a week day time position and Chris Struble holds the position of Lieutenant. Mike Meacham FF/CEP and Steven Vickers FF/EMT make up the balance of the career staff. FF/EMT Jacob Orona and Paramedic FF Jarod Richards were added as shift coverage reserve firefighters. FF/EMT Cody Wilson was hired as a part time seasonal employee in June of 2015; his seasonal status will end in October of this year. Cody will remain on the roster as a shift coverage reserve firefighter after his seasonal position ends. Sam Ross remains as GFD's only true volunteer.

Founding member and Board Chairman Dan E Leeds passed away in August 2014.

Deputy Chief Sluiter and Board Member Jim Wright attended the January AFDA conference in Laughlin, Nevada, attending training sessions on fire district finance. Chief Wade attended the AFDA conference in Tucson during July.

Fit for Duty physicals were not performed this year as we were unable to locate a physician to do them.

Chief Mark Wade remains Secretary of the Northern Arizona Fire Chief's Association Executive Board.

Jimmy Emerson filled the vacant seat left by Dan Leeds on the Fire District Board. Lee Smith became the Board Chairman.

## **Community Involvement**

Greer Fire held the 4th Annual Pancake Breakfast at Fourth of July. Donations were accepted to the Fire Auxiliary with proceeds going toward the purchase of a treadmill and gym equipment for use by the membership to maintain their fitness level. 500 breakfasts were served over a period of 3 hours.

The Open House was held over Memorial Day weekend with an estimate of 400 people in attendance. USFS gave a presentation on the current state of the forest, Apache County Sheriff's Office was registering children, and the Firewise trailer was on display. The Auxiliary was handing out fire safety literature and other Greer Fire PR items. A kid's muster was setup and participants were able to use fire hoses to put out simulated fires.

Localized flooding continues to occur during monsoon season as a continued result of the Wallow Fire. These areas have been long identified and are monitored during each storm by District staff.

The District increased its community involvement by assisting the Butterfly Museum with the opening of the museum for the season. Also staff assisted with a pancake breakfast held as a fund raiser by the Butterfly. Snow removal for the community center and other public buildings was also implemented.

The District's electronic sign board is being utilized by the Butterfly Museum, Greer Community Center and Music in Greer as well as others for advertisement of their upcoming events. District information takes priority over public use.

## **Equipment**

No major new fire equipment was purchased in FY 2014-2015.

## **Communications**

No new communication equipment was added for this year.

## **Apparatus /Vehicles**

A private donation of a new RDC (rapidly deployable craft), rescue boat and motor were made to the Fire District. The RDC is an inflatable boat similar to a whitewater raft, with the exception of an open bow and stern. It is designed for use on snow, ice and water. The unit was used in rescue situations 4 times from our receipt of the boat in April until June 30. The crew trained heavily to be able to deploy and launch the boat as well as effecting water rescues.

U-1754, 1957 Diamond T 2 ½ water tender was taken out of service and was sold by sealed bid.

The District's Massey Ferguson tractor was disassembled and restored by the crew through the winter months. The restoration included rewiring of lights, paint, replacement of broken or missing body parts, as well as a new seat. The tractor was placed on display at the open house.

GFD UTV was outfitted with a removable skid unit that was fabricated in house by staff. The skid consists of a small pump and a 40 gallon water tank. The skid unit will allow the District to utilize this piece of apparatus more effectively for wildland fire scenarios. It is quickly removable to allow the UTV to be used for other tasks as needed. Intercom headsets were installed and integrated into the radio system after a generous donation from Lytle Motorsports.

## **Building Improvement /Maintenance**

In the 2014-2015 fiscal year GFD entered into talks with Verizon Wireless to place on 100' cell tower at Station #2. As of June 31<sup>st</sup> no contracts had been signed yet. Discussions will carry over into 2015-2016 with a projected completion of the project in 2016.

Station #1 was emptied of surplus items. Many items were donated, sold for scrap or taken to Blue Hills for disposal. Sheetrock was purchased for the interior and installation began just prior to the end of the fiscal year. The project will be completed by fall of 2015. Station #1 will have many pieces of equipment and documents from GFD's inception on display in a "museum" area upon its completion.

Construction of a new hose drying rack was completed above the NW bay of Station #2.

The fan motor for the exhaust ventilation system was replaced.

GFD began discussions with neighboring property owners to Station #2 in regard to construction of a block wall around the District property to conceal fire apparatus and training props on the grounds.

The east water storage tank at Station #2 was rehabilitated to remove rust and preserve the tank from further damage.

## **Site and Grounds Improvements**

The grounds at Station #2 were cleaned up and the shipping containers used for storage were sorted and un-needed items were disposed of. A large trailer containing scrap steel and metal was taken to Page Steel.

### **Medical Equipment**

No new significant medical equipment was purchased during FY 2104-2015.

### **Grants**

The District completed and submitted an application for the Assistance to Fire Department Grant. The grant was for completely new PPE ensembles for all District personnel, 10 SCBA and a thermal imaging camera. \$120,000 has been budgeted by the District for use if awarded. As of this time we have neither been notified of denial or award for this grant.

The District received funding through a joint grant with Eagar Fire and Springerville Fire for communications equipment and SCBA bottles. The GFD will be the agency administering the grant. The grant will be implemented over the course of the next 2 years.